



Waterford ES

Media Center Collection Development Plan
2023-24

Danielle Arbelaez Willis

[Danielle Arbelaez Willis \(Sep 12, 2023 15:03 EDT\)](#)

Danielle Arbelaez-Willis
Principal

Deadra Farrow

Deadra Farrow
Certified Educational Media Specialist

Table of Contents

Table of Contents	2
Executive Summary	3
District Strategic Plan 2025	3
School Collection Development Plan	3
School Assessment Analysis	4
Collection Analysis	5
Collection Analysis by Category	5
Notes	6
Representation Analysis	7
Results	7
Strategic Focus	8
Budget and Purchasing Plan	9
Annual Budget 2023-2024	9
Purchasing Plan 2023-2024	9
Year-to-Year Collection Change	10

Executive Summary

District Strategic Plan 2025

Orange County Public Schools is the eighth-largest school district in the United States and the fourth largest in Florida. The district serves more than 206,000 students at 202 schools and is one of the largest employers in Central Florida with more than 25,000 team members.

Vision: To ensure every student has a promising and successful future.

Mission: With the support of families and the community, we create enriching and diverse pathways to lead our students to success.

School Collection Development Plan

Waterford ES serves 535 students enrolled in grades Kindergarten through fifth. The student population's ethnicity is made of 55% Hispanic and 45% Non-Hispanic students. Additionally, we serve a diverse population made up of 71% White, 16% Black, 0% Native, 4% Asian, 1% Pacific, and 9% Multicultural students.

The administration includes Principal Danielle Arbelaez-Willis and Assistant Principal Karen Pope. Waterford ES is proud to offer the many special programs which provide students with opportunities. These include the SSYRA program, News Crew, Safety Patrols, ORFF Ensemble, Robotics Club, and Running Club.

A thorough analysis of the current media center collection at Waterford ES indicates that the average age of the collection is 2010 and the number of books per student is 19. The [American Association for School Libraries](#) has established a criteria for highly effective media centers that includes a ratio of 15-20 books available per student in the collection. At this time, Waterford ES does not meet the recommended standards for the number of books per student.

The analysis of the collection also revealed the following areas of strengths and concerns:

- Hispanic students are 55% of the school's population. However, we only have 233 titles written in Spanish and only 2.3% of the characters or biographies feature Hispanic people.
- Based on the State Assessment Reading scores, in order to meet the needs of students below proficiency levels, there is a need for *lower/higher* reading levels texts.
- After an intense summer weeding in all areas of the media center, the average age of the collection has greatly improved to provide relevant and interesting texts for students.
- This collection is in need of more popular fiction, graphic novels and non-fiction books like popular biographies, cars and animals that interest students.

School Assessment Analysis

The school analysis provides an overview of the school's assessment data for the previous two school years.

Proficiency Data							
Assessment	2021-22	Assessment	2022-23	Assessment	2021-22	Assessment	2022-23
		Star Early Literacy Proficiency	61%				
		Star Reading Proficiency	69%			Star Math Proficiency	69%
FSA ELA Grade 3	67%	FAST ELA Proficiency Grade 3	59%	FSA Math Grade 3	60%	FAST Math Proficiency Grade 3	60%
FSA ELA Grade 4	65%	FAST ELA Proficiency Grade 4	58%	FSA Math Grade 4	71%	FAST Math Proficiency Grade 4	64%
FSA ELA Grade 5	68%	FAST ELA Proficiency Grade 5	64%	FSA Math Grade 5	61%	FAST Math Proficiency Grade 5	65%
NGSSS Sci 5 EOC	59%	NGSSS Sci 5 EOC	67%				

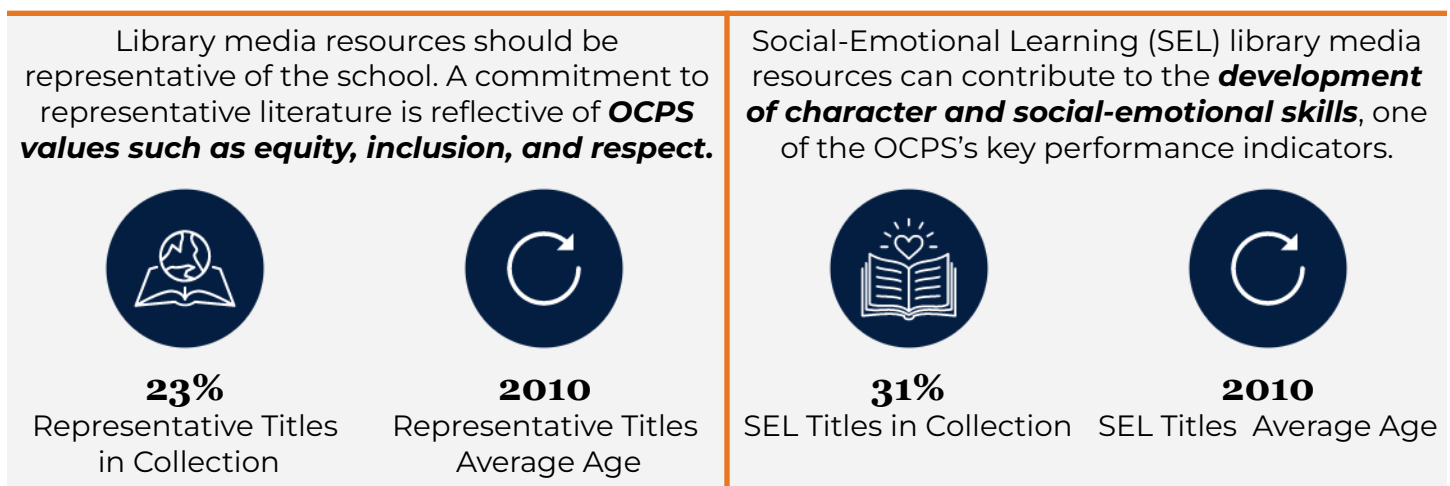
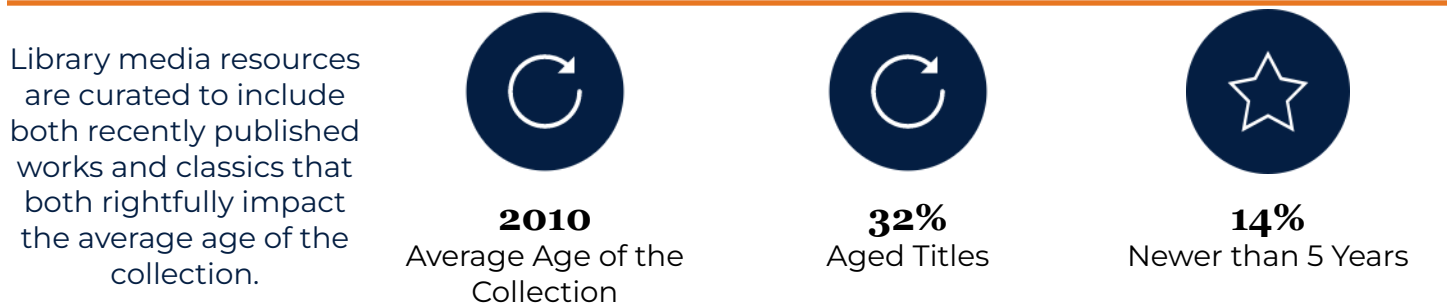
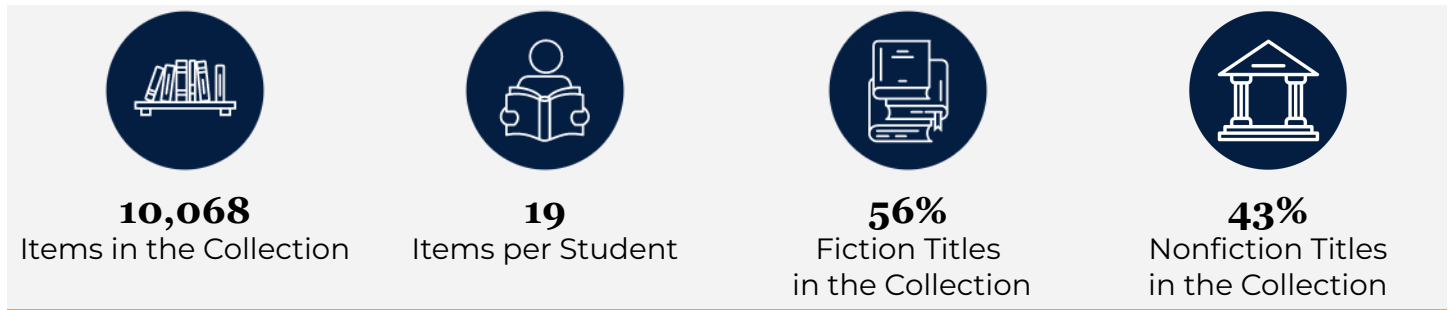
Comparison between 2021-22 and 2022-23 Testing Data

(adapted from <https://www.fldoe.org/accountability/assessments/k-12-student-assessment/results/2023.stml>)

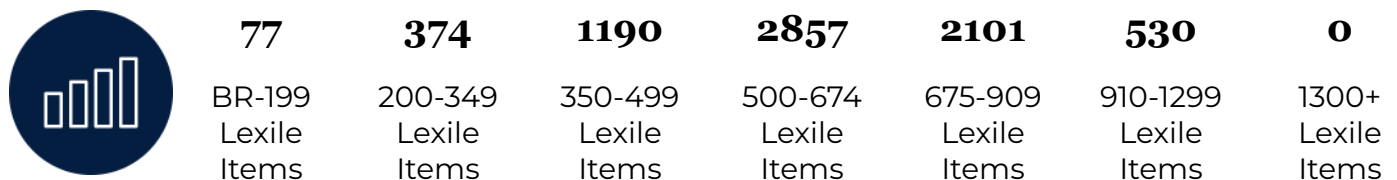
In 2023, the state transitioned from Florida Standards Assessments (FSA) to Florida Assessment of Student Thinking (FAST) for English Language Arts (ELA) and Mathematics. The 2022-23 for FAST and Benchmarks for Excellent Student Thinking (B.E.S.T.) End-of-Course (EOC) assessments are based on **provisional** achievement level cuts that are linked to each assessment's respective 2021-22 reporting scale. Comparisons should not be made between the 2023 data and previous years' data. The implementation of FAST K-2 in the 2022-23 school year was the first administration of statewide assessments for students in grades K-2. These assessments include Star Early Literacy Proficiency, Star Reading Proficiency, and Star Math Proficiency.

Collection Analysis

The collection is developed for and influenced by students, their interests, academic needs and alignment to the curriculum. The data below is a snapshot of the collection based on a Titlewise Analysis from July 2023. Purchasing or weeding after that time is not reflected in this data.



Library media resources are distributed across the **Lexile reading level ranges** noted below.



Collection Analysis by Category

The information collected in this section provides a detailed look at the current library collection by classification and genre. The information was gathered from Follett Destiny, the library management system, and Titlewave, the vendor's ordering and analysis tool.

Section	# of Titles	Average Age
Computer Science, Information & General Works	68	2014
Philosophy & Psychology	30	2012
Religion	23	2012
Social Sciences	555	2006
Language	216	2007
Science	1112	2011
Technology	584	2011
Arts & Recreation	463	2011
Literature	188	2008
History & Geography	429	2011
Biography	697	2009
Easy	2949	2007
General Fiction	5260	2010
Graphic Novels	347	2016

Notes

- The average age of Literature texts (2008) is lower than average due to the inclusion of classic literature.
- Technology and Science texts have greatly improved due to intense weeding focus on the non-fiction section.

Representation Analysis

Enrollment & Demographic Data					
535 2023-24 Student Enrollment as of September 7, 2023	Subgroups		Federal Ethnicity		
	21% ELL	14% ESE	55% Hispanic	45% Non-Hispanic	
Federal Race Category					
71% White	16% Black	0% Native	4% Asian	1% Pacific	9% Multicultural

To deepen focus on strategic collection development, specific sections of the collection were analyzed in detail to determine whether the media center collection reflects and represents various points of view and experiences. The goal is to provide a balanced collection that can be both a mirror, to reflect a reader's experience, and a window, so readers can experience different viewpoints.

Results

Based on the available school data of Waterford ES in comparison to Collection Analysis results, it was found that:

Student Representation	% of Students	Total # of Titles	Total % of Titles	Avg. Age of Titles
Hispanic	55%	233	2.3%	2011
Black	16%	318	3.1%	2012
Asian	4%	120	1.1%	2013

Strategic Focus

This page lists the priorities for selection and weeding for each school year and includes the action, updates, and outcomes. This is subject to change due to funding and time constraints.

School Year	Strategic Focus
2023-2024	Selection Priorities <ul style="list-style-type: none">• Hispanic/Bi-lingual texts• Biographies of interest• Science (NF500)• Sports (NF790)
	Weeding Priorities <ul style="list-style-type: none">• Everybody• Biography
2024-2025	Selection Priorities <ul style="list-style-type: none">• Fill in missing series• History & Geography (NF900)• Social Sciences (NF300)
	Weeding Priorities <ul style="list-style-type: none">• Fiction (Chapter Books)• NonFiction (all)

Budget and Purchasing Plan

This page outlines the current budget available and specifically lists the priorities for this school year (2023-2024).

Annual Budget 2023-2024

State Funds	
<i>Source</i>	<i>Amount</i>
State (1001111000)	\$6,663.97
Internal Accounts	
<i>Source</i>	<i>Amount</i>
Read A Thon Donations (2022)	\$1833.00
Read A Thon Donations (2023)	\$5000.00
Library Fines	\$219.00
TOTAL	\$13,715.97

Purchasing Plan 2023-2024

Approximate Purchasing Plan	
<i>Purpose</i>	<i>Amount</i>
Hispanic/Bi-Lingual	\$5000
Non-Fiction	\$5000
SSYRA (2024)	\$1000
Supplies (repair, organization, incentive, etc)	\$1000
TOTAL	\$12,000

Year-to-Year Collection Change





The information below represents the year-to-year change within the library media center collection from the 2022-23 to 2023-24 school year. The 2022-23 data is based on a collection analysis from June 2022, while the 2023-24 is based on a collection analysis from July 2023.

Data Reflection

- By completing an extensive weeding, the average age of the collection has greatly improved.
- While the average copies per student have decreased, the quality of literature and text has improved by providing relevant and diverse topics to reflect student population.
- Purchases throughout the year have increased the amount of titles that represent our students.

2022-23 Purchased and Weeded Materials

Materials Added to the Collection	443	Materials Weeded from the Collection	4350
-----------------------------------	------------	--------------------------------------	-------------

Category	2022-23	2023-24
 Items in the Collection	13,677	10,068
 Items per Student	26	19
 Average Age of Collection	2007	2010
 Representative Titles in the Collection	22%	23%

OCPS Waterford ES Collection Development Plan 2023-2024

Final Audit Report

2023-09-12

Created:	2023-09-12
By:	Deadra Farrow (deadra.farrow@ocps.net)
Status:	Signed
Transaction ID:	CBJCHBCAABAAXOQ0ntvIREJaRb95VqZsAa92sTSklu97

"OCPS Waterford ES Collection Development Plan 2023-2024" History

-  Document created by Deadra Farrow (deadra.farrow@ocps.net)
2023-09-12 - 5:27:30 PM GMT- IP address: 184.88.36.12
-  Document emailed to Danielle Arbelaez Willis (danielle.arbelaezwillis@ocps.net) for signature
2023-09-12 - 5:28:03 PM GMT
-  Email viewed by Danielle Arbelaez Willis (danielle.arbelaezwillis@ocps.net)
2023-09-12 - 7:02:50 PM GMT- IP address: 168.184.83.49
-  Document e-signed by Danielle Arbelaez Willis (danielle.arbelaezwillis@ocps.net)
Signature Date: 2023-09-12 - 7:03:04 PM GMT - Time Source: server- IP address: 168.184.83.49
-  Agreement completed.
2023-09-12 - 7:03:04 PM GMT